

Family wellbeing in New Zealand

FEBRUARY 2017

The focus

This *At A Glance* looks at New Zealand families and how they're faring. The information used in this publication has been drawn from our *Families and Whānau Status Report 2016*, which aims to measure, monitor and understand family wellbeing in New Zealand. We are sharing this information to help policymakers and community leaders make more informed decisions about the work they do with families and whānau in New Zealand.

We see families as the key **building blocks** of our society. They give each of us a sense of identity and belonging. The core functions of a family are to:



CARE, NURTURE AND SUPPORT



MANAGE RESOURCES



PROVIDE SOCIALISATION AND GUIDANCE

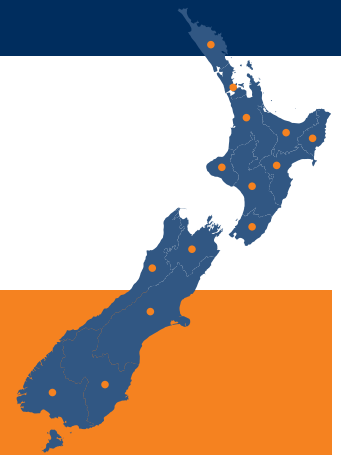


PROVIDE IDENTITY AND A SENSE OF BELONGING.



About *At a Glance*

Superu's *At a Glance* series uses infographics to illustrate research findings or key information about a priority topic.



Did you know...

that there are **well over a million** families in New Zealand?

Specifically **1,136,229** at last count.

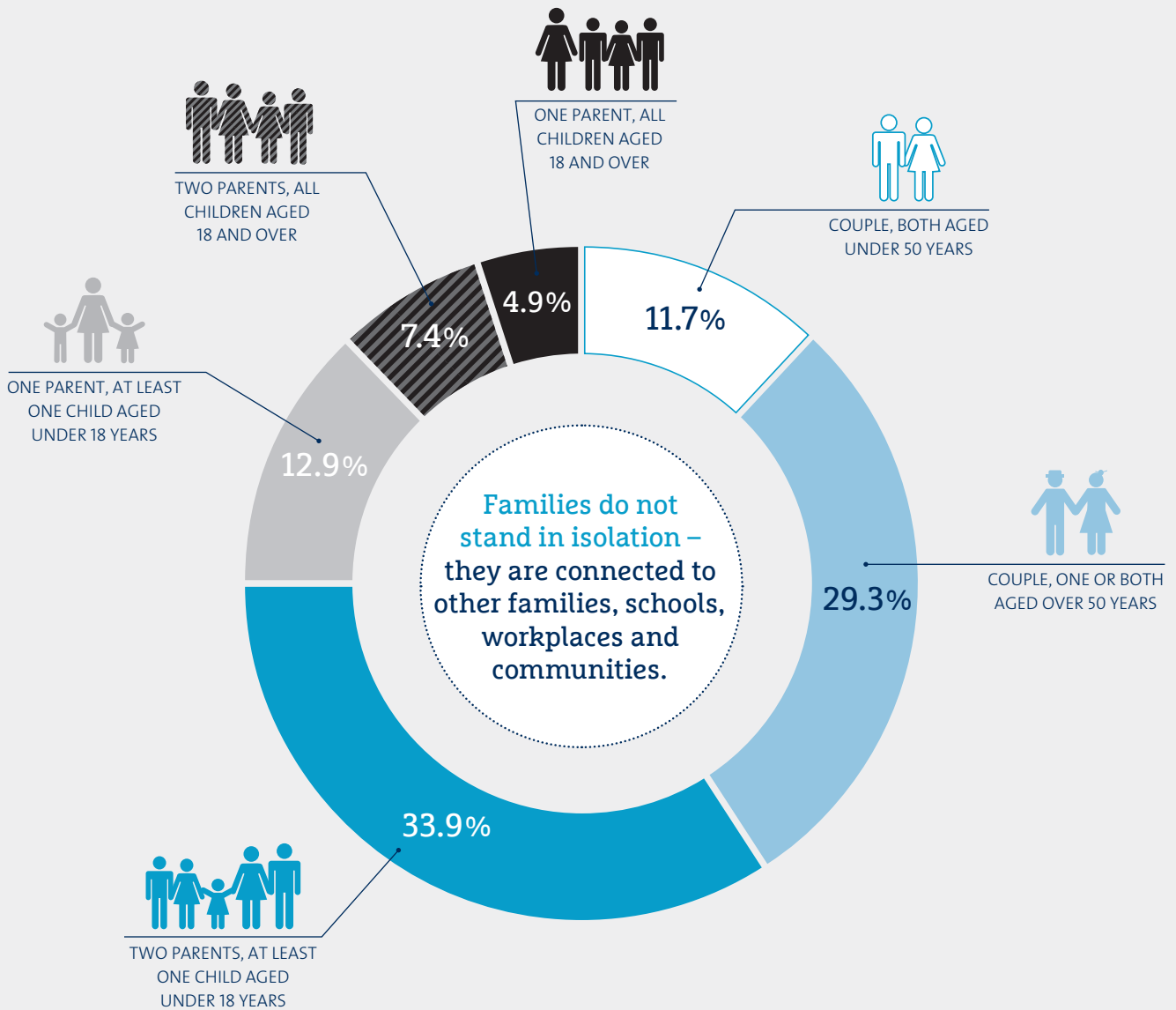
How are families faring in the regions?

See our factsheets on family wellbeing in:

- Northland
- Auckland
- Waikato
- Bay of Plenty
- Hawke's Bay
- Gisborne
- Taranaki
- Manawatu-Wanganui
- Wellington
- Marlborough & Nelson
- West Coast & Tasman
- Canterbury
- Otago
- Southland

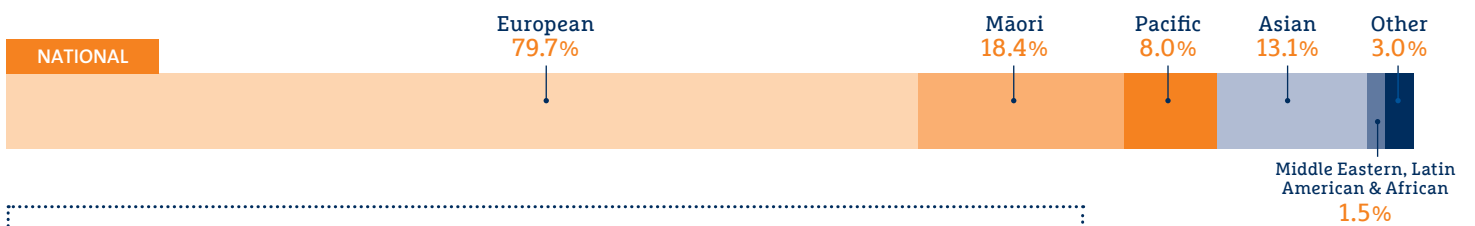
You'll find them on our website:
www.superu.govt.nz/regionaldata

Family types in New Zealand



Source: Census of Population and Dwellings 2013.

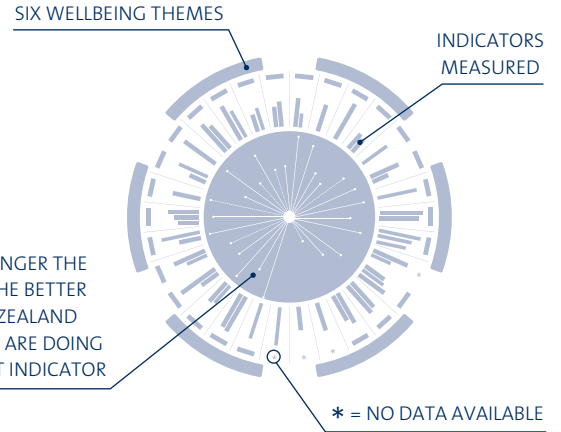
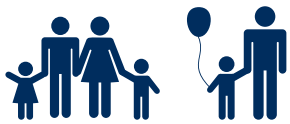
Family ethnicity



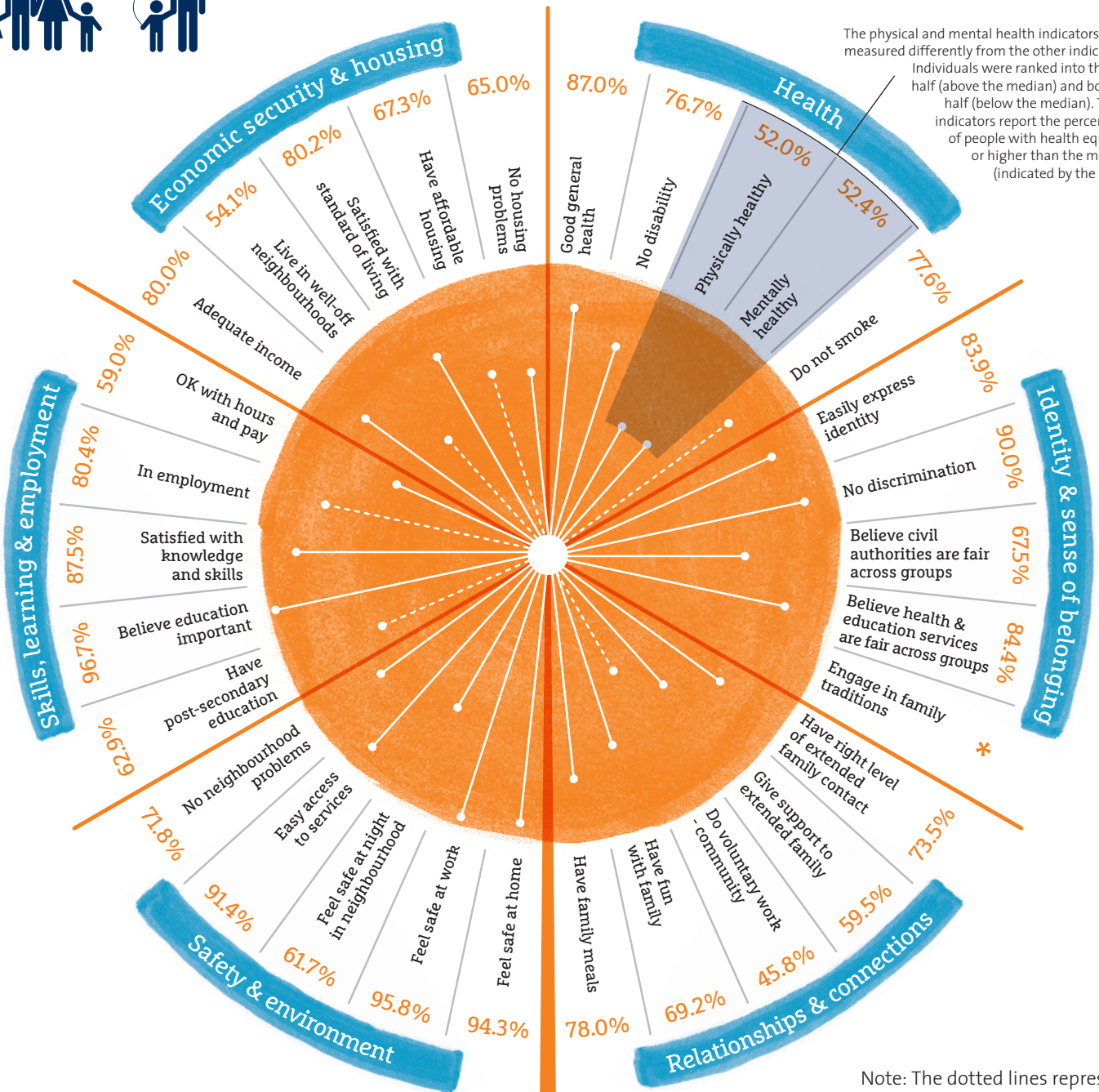
Ethnicity is based on **at least one family member identifying with that group**. This means that a family can be represented in more than one ethnic grouping.

How are New Zealand families faring?

We assess wellbeing against **six broad themes** that influence and contribute to a family's ability to function. We also take into account different 'indicators' under each theme. This diagram provides a snapshot of New Zealand families according to these specific indicators.



The physical and mental health indicators were measured differently from the other indicators. Individuals were ranked into the top half (above the median) and bottom half (below the median). These indicators report the percentage of people with health equal to or higher than the median (indicated by the arch).

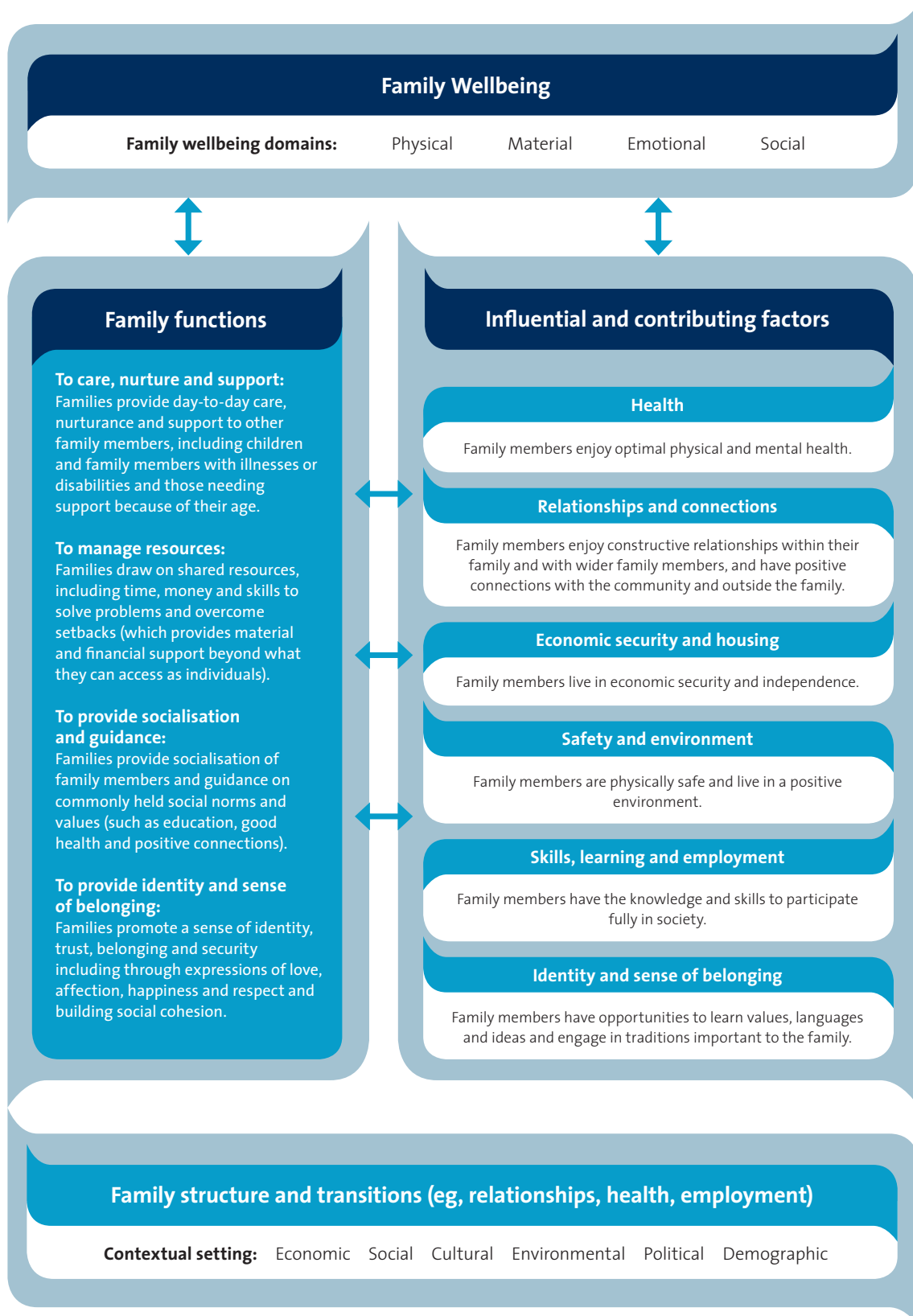


Note: The dotted lines represent individuals and the solid lines represent families. These differ because data was drawn from different sources

Source: General Social Survey data from 2008, 2010 and 2012.

Family wellbeing framework

The Family Wellbeing Framework identifies **four core family functions** and shows how they contribute to wellbeing. The Framework shows just how complex families are, and that there are many factors that influence their ability to fulfil their core functions.



Our purpose

To increase the use of evidence by people across the social sector so that they can make better decisions – about funding, policies or services – to improve the lives of New Zealanders, New Zealand’s communities, families and whānau.

What we do

We work across the wider social sector to:

- **promote** informed debate on key social issues for New Zealand, its families and whānau, and increase awareness about what works
- **grow** the quality, relevance and quantity of the evidence base in priority areas
- **facilitate** the use of evidence by sharing it and supporting its use in decision-making.

About the Families and Whānau Status Reports

Each year since 2013, we have produced an annual families status report that measures and monitors the wellbeing of New Zealand families and whānau. This requirement was introduced by the Families Commission Amendment Act 2014, and we are proud to undertake this work.

The general aim of the Families and Whānau Wellbeing Research Programme is to increase the evidence about family and whānau wellbeing. Our research aims to better understand how families and whānau are faring, and the key role they play in society. This is so that decision-makers in the social sector make informed decisions about social policies and programmes and better understand what works, when and for whom.



Related publications:



Families and Whānau Status Report 2016 (June 2016)



Families and Whānau Status Report 2016. Technical companion report (June 2016)



Families and Whānau Status Report 2016. Executive Summary (June 2016)

About this At A Glance

This is one of several factsheets examining family wellbeing in New Zealand’s regions. All the regional reports and the full report can be found on our website: superu.govt.nz. If you’d like more information about anything mentioned here, contact us on 04 917 7040 or email enquiries@superu.govt.nz