

Te Ritorito 2017: Whānau data and measuring whānau wellbeing

3 April 2017

Liz MacPherson, Government Statistician

 @GovStatistician

@Stats_NZ



Our role



Te Kupenga

Ngā puna kōrero: Where Māori speak te reo

55% of Māori adults can kōrero Māori*

*People of Māori ethnicity aged 15 years and over who can speak te reo Māori 'very well', 'well', 'fairly well', or 'not very well'



50,000 can speak it 'very well' or 'well'



56,500 can speak it 'fairly well'



151,000 speak it 'not very well'

64% of te reo speakers kōrero Māori to someone they live with ...and are most likely to speak te reo to their kids

Of Māori who speak te reo very well/well



93% kōrero Māori to their pre-school children at home
90% kōrero Māori to their primary school children at home
88% kōrero Māori to their secondary school children at home

Of Māori who speak te reo fairly well



91% kōrero Māori to their pre-school children at home
91% kōrero Māori to their primary school children at home
84% kōrero Māori to their secondary school children at home

Of Māori who speak te reo not very well



74% kōrero Māori to their pre-school children at home
69% kōrero Māori to their primary school children at home
61% kōrero Māori to their secondary school children at home

67% of te reo speakers use the language outside the home.



New Zealand Government

census
Stats **NZ**

The census test is coming to Whanganui.

Let's find out.

newzealand.govt.nz

census
Stats **NZ**

Doing the census test online is easy, but paper still works.

The census test is online, but we know some people don't have access to the internet – or simply prefer to complete a paper form. If so, just call **0800 CENSUS** and request your paper form, and we'll send one out to you.

Find out more at census.govt.nz

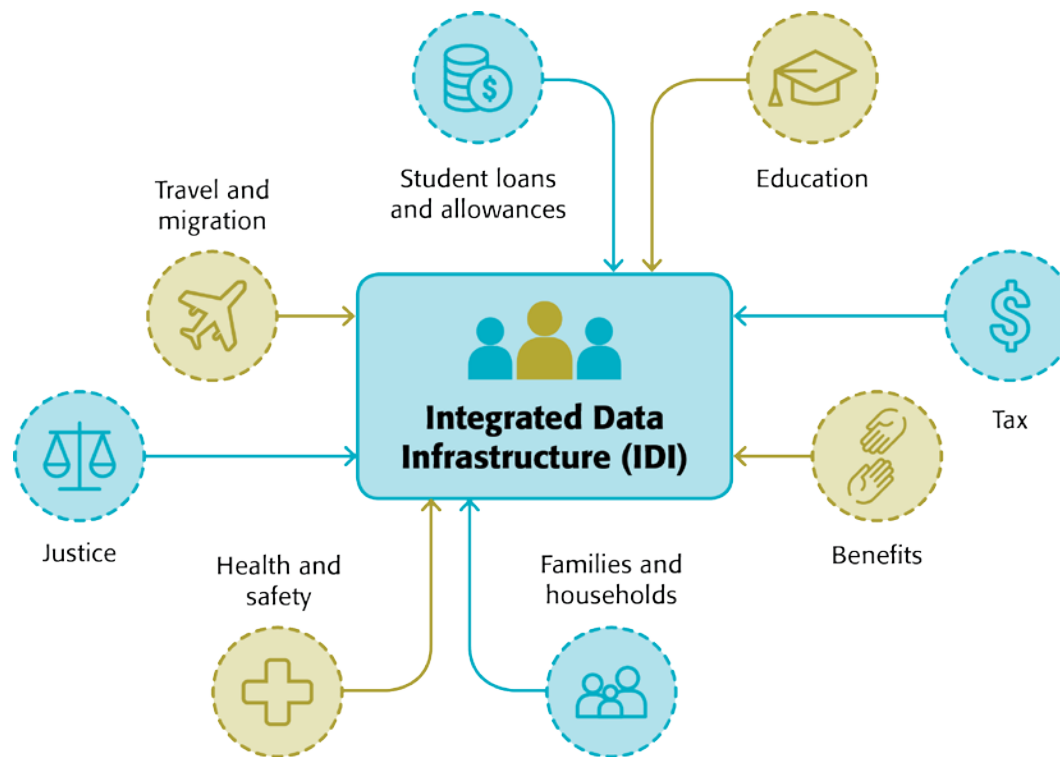
Lost your code? Call us to get a new one.

Let's find out.

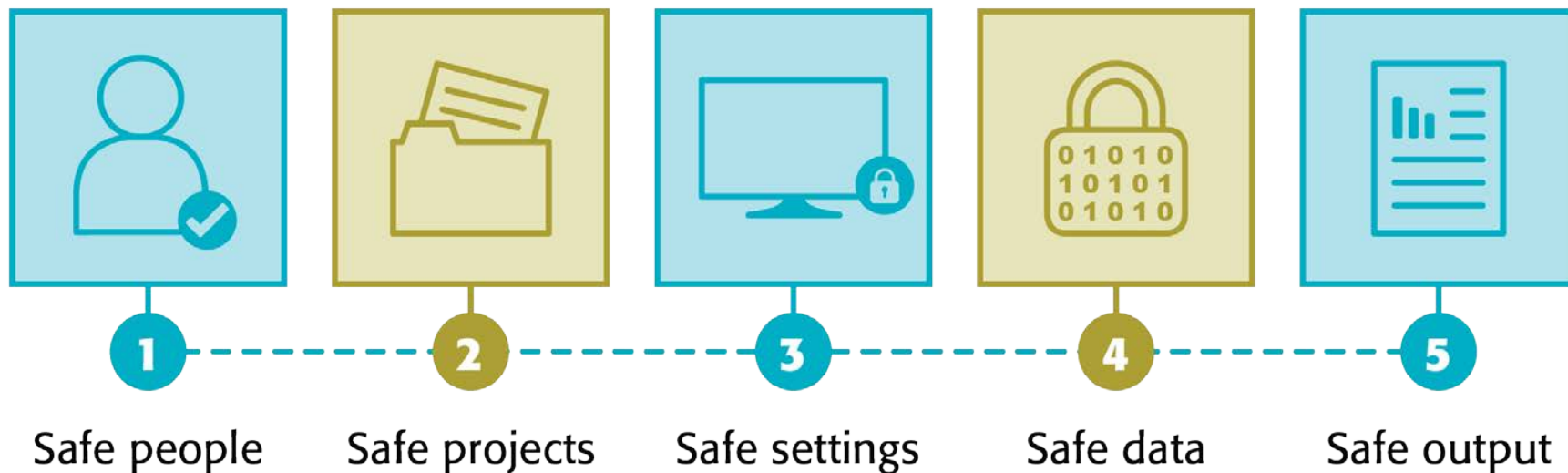
0800 543 734



Integrated Data Infrastructure (IDI)



The Five Safes





Iwi Standard



<https://www.youtube.com/watch?v=Bry-D7r6ZB4>