

About Growing Up in New Zealand

JULY 2015

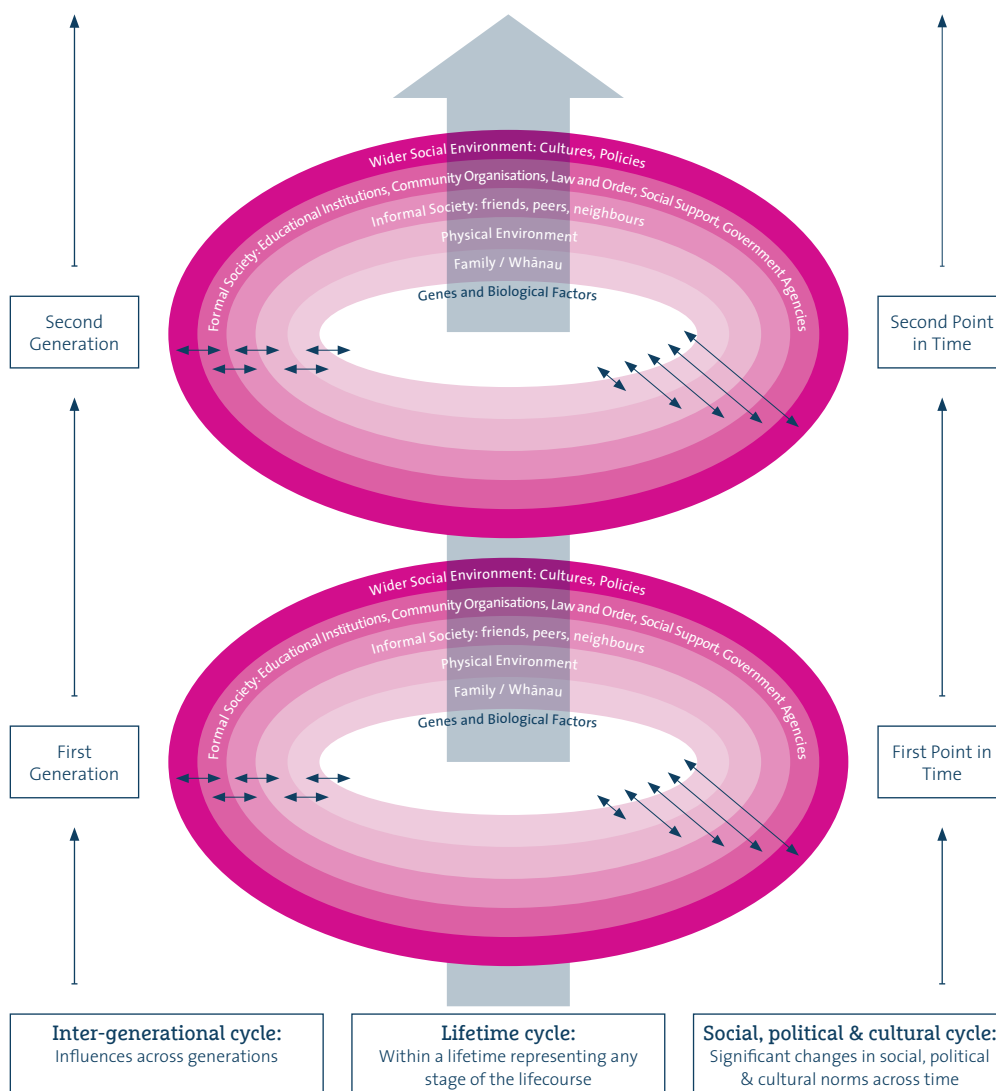
THE FOCUS

Growing Up in New Zealand (GUINZ) is a longitudinal study following nearly **7,000 New Zealand children** born in 2010 through to adulthood. GUINZ provides a picture of what it's like to be a child growing up in contemporary New Zealand.

About *At a Glance*

Superu's *At a Glance* series uses infographics to illustrate research findings or key information about a priority topic.

GROWING UP IN NEW ZEALAND CONCEPTUAL FRAMEWORK

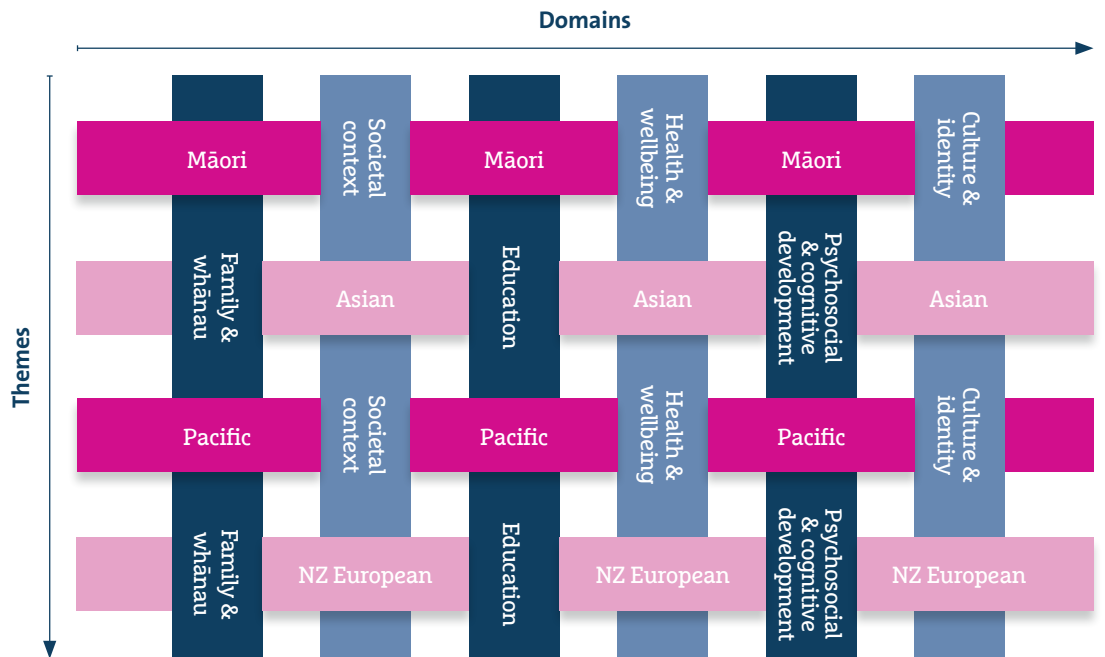


The GUINZ conceptual framework puts the child at the centre in order to understand the unique context of growing up in New Zealand.

The GUINZ framework represents how influences – from family and whānau through to wider social policies – interact and shape children's development over time.

STUDY DESIGN

Information at each data collection point is collected across **multiple domains of influence** and respects the ethnic diversity of New Zealand children today.

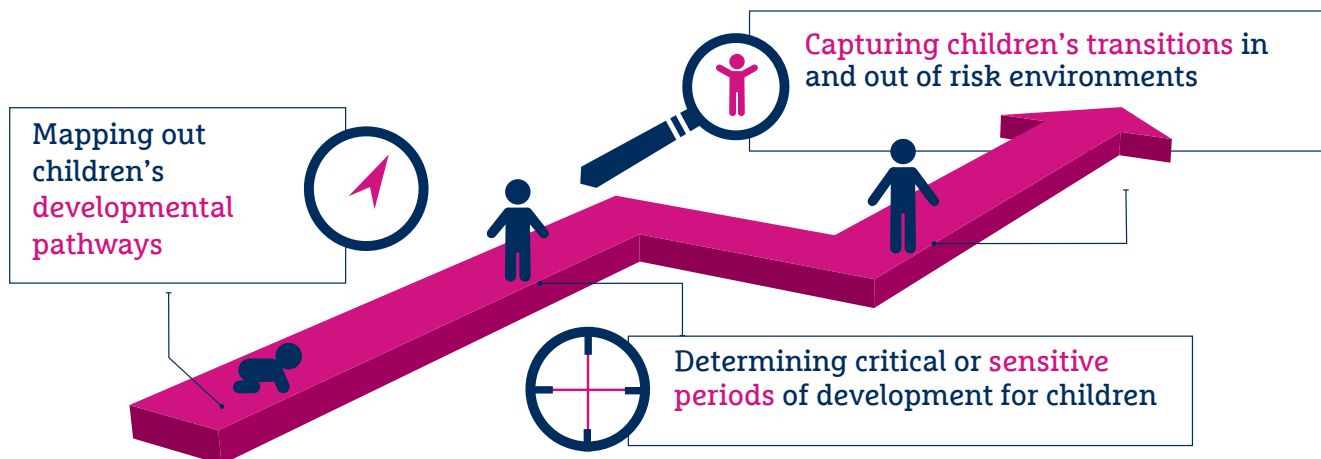


WHY GROWING UP IN NEW ZEALAND IS UNIQUE

1. Large-scale longitudinal study of New Zealand children
2. Ethnically representative sample
3. Considers inter-generational influences on child development
4. Includes fathers and partners
5. Collects biological samples from the children
6. Began before the children were born.



THE BENEFITS OF LONGITUDINAL RESEARCH



ABOUT THE PARENTS

Age of parents in late pregnancy

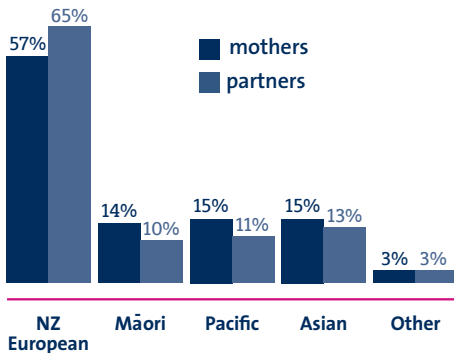


Mothers - 6,822
WERE AGED BETWEEN 15 AND 47
(AVERAGE AGE OF 30)



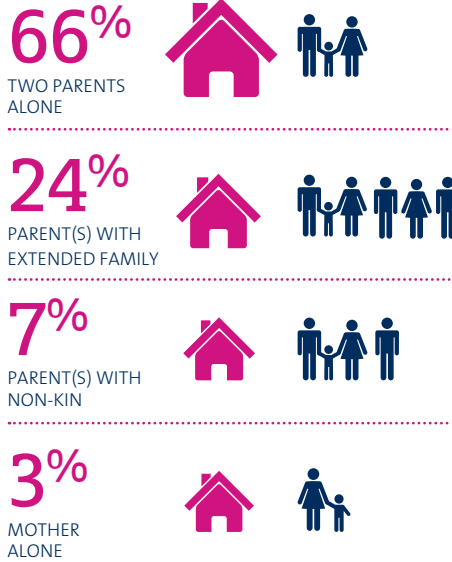
Partners - 4,401
WERE AGED BETWEEN 16 AND 64
(AVERAGE AGE OF 33)

Main ethnicity of the parents



Around 5% of parents identified with two main ethnic groups

Living arrangements during pregnancy

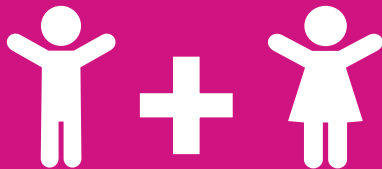


1/3

Parental education

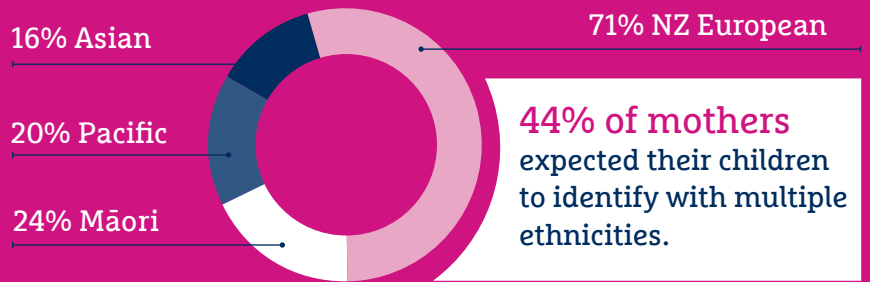
Over 1/3 of all parents of the GUiNZ children have tertiary level educational qualifications (31% mothers and 36% partners). More than half the mothers with degrees had their first child after the age of 30.

ABOUT THE CHILDREN



3,526 BOYS 3,320 GIRLS
6,846 CHILDREN

Parents' expectation of their children's ethnic identity during late pregnancy



NUMBER OF CHILDREN IN THE STUDY

The study has maintained contact with a high proportion of mothers and children over their first 1,000 days.

BIRTH

6,846



NINE MONTHS

6,795



TWO YEARS

6,745





Our purpose

To increase the use of evidence by people across the social sector so that they can make better decisions - about funding, policies or services - to improve the lives of New Zealanders, New Zealand's communities, families and whānau.

What we do

We work across the wider social sector to:

- **promote** informed debate on key social issues for New Zealand, its families and whānau, and increase awareness about what works
- **grow** the quality, relevance and quantity of the evidence base in priority areas
- **facilitate** the use of evidence by sharing it and supporting its use in decision-making.

Related Superu publications:



At a Glance: Families and whānau on the move (February 2015) . Available at: superu.govt.nz/growingup

Source reports:



Morton et al. (2010). *Growing Up in New Zealand: A longitudinal study of New Zealand children and their families. Report 1: Before we are born.* Auckland: Growing Up in New Zealand.



Morton et al. (2012). *Growing Up in New Zealand: A longitudinal study of New Zealand children and their families. Report 2: Now we are born.* Auckland: Growing Up in New Zealand.



Morton et al. (2014). *Growing Up in New Zealand: A longitudinal study of New Zealand children and their families. Vulnerability Report 1: Exploring the Definition of Vulnerability for Children in their First 1000 Days.* Auckland: Growing Up in New Zealand.